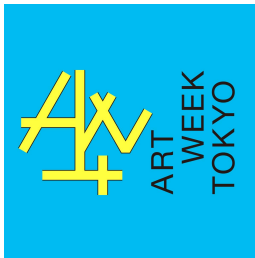


Hideo Anze Solo Exhibition “Photogenic Drawing”

- Period November 3rd (Thursday), 2022 - December 3rd (Saturday), 2022
- Hours Wednesdays through Saturdays, 13:00 - 19:00
(closed on Sundays, Mondays, Tuesdays, and National Holidays)
**open under irregular hours during Nov. 3-6 (details below)*
- Venue KANA KAWANISHI GALLERY
4-7-6 Shirakawa, Koto-ku, Tokyo 135-0021 JAPAN
**car parking available in front of the gallery*

▼ Participating in “ART WEEK TOKYO”



The gallery will participate in “ART WEEK TOKYO” from November 3 to November 6. This art event will connect more than 50 art galleries and museums across Tokyo with shuttle buses running on six routes. Please note the exhibition will have irregular opening hours during this period as below:

- Dates: November 3rd (Thursday) - 6th (Sunday), 2022
- Hours: 10:00-18:00 **Nov. 4 (Fri) open until 20:00*
- Details: <https://www.artweektokyo.com/en/>

https://upload.wikimedia.org/wikipedia/commons/f/f0/VanGogh-self-portrait-with_bandaged_ear.jpg

https://upload.wikimedia.org/wikipedia/commons/a/a4/Vincent_Willem_van_Gogh_106.jpg

https://upload.wikimedia.org/wikipedia/commons/4/4a/Van_Gogh_Self-Portrait_with_Dark_Felt_Hat_1886.jpg

https://upload.wikimedia.org/wikipedia/commons/5/57/Vincent_van_Gogh_-_Zelfportret_-_Google_Art_Project.jpg

https://upload.wikimedia.org/wikipedia/commons/6/6b/SelbstPortrait_VG2.jpg

https://upload.wikimedia.org/wikipedia/commons/4/42/Van_Gogh_-_Selbstbildnis_mit_Pfeife.jpeg

https://upload.wikimedia.org/wikipedia/commons/thumb/5/54/Zelfportret_als_schilder_-_s0160V1962_-_Van_Gogh_Museum.jpg/1678px-Zelfportret_als_schilder_-_s0160V1962_-_Van_Gogh_Museum.jpg

https://upload.wikimedia.org/wikipedia/commons/9/95/Van_Gogh_Self-Portrait_with_Straw_Hat_1887-Detroit.jpg

https://upload.wikimedia.org/wikipedia/commons/8/8e/Van_Gogh_self-portrait_dedicated_to_Gauguin.jpg

https://upload.wikimedia.org/wikipedia/commons/c/c6/Van_Gogh_-_Selbstbildnis34.jpeg

<https://upload.wikimedia.org/wikipedia/commons/d/d5/Self-Portrait3.jpg>

https://upload.wikimedia.org/wikipedia/commons/3/38/VanGogh_1887_Selbstbildnis.jpg

https://upload.wikimedia.org/wikipedia/commons/6/60/Vincent_Willem_van_Gogh_107.jpg

https://upload.wikimedia.org/wikipedia/commons/1/1e/Van_Gogh_-_Selbstbildnisse.jpeg

https://upload.wikimedia.org/wikipedia/commons/a/a8/Van_Gogh_Self-Portrait_with_Straw_Hat_1887-Metropolitan.jpg

https://upload.wikimedia.org/wikipedia/commons/7/71/Vincent_Willem_van_Gogh_102.jpg

concept image for the exhibition, *Photogenic Drawing*
2022 | © Hideo Anze, courtesy KANA KAWANISHI GALLERY

■Please contact below for any image enquiries■

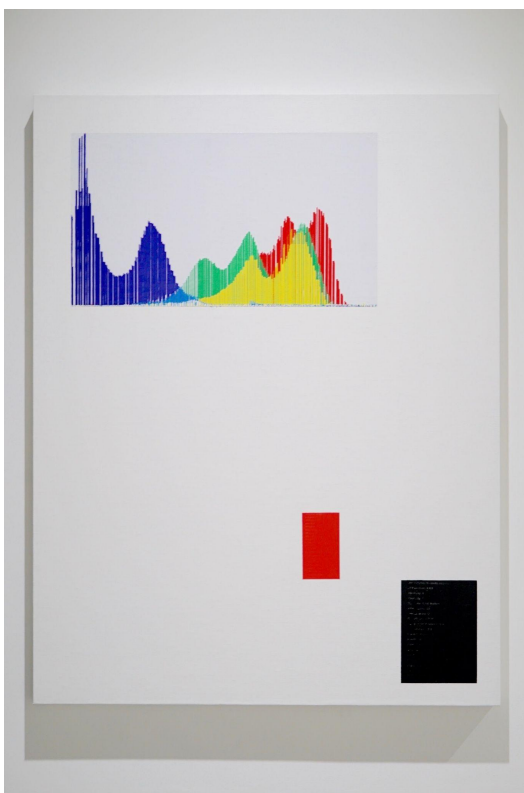
KANA KAWANISHI GALLERY is pleased to present *Photogenic Drawing*, a solo exhibition by Hideo Anze, from Thursday, November 3, 2022.

Hideo Anze is an artist known for his conceptual works using photography. With five works from his representative *Stripe (50Hz)* series in the British Museum permanent collection (UK), his reputation is steadily growing both in Japan and abroad. His first exhibition at the gallery in three years will focus on new works from his *RGB* series, which expresses his unique interpretation of contemporary photography.

Inspired by the fact that William Henry Fox Talbot, the inventor of calotype photography, called his technique “photogenic drawing (=drawing with light)” rather than photography, the artist obtains images of masterpiece paintings from the internet and paints the histogram of the downloaded image on a canvas the same dimension as the so-called masterpiece.

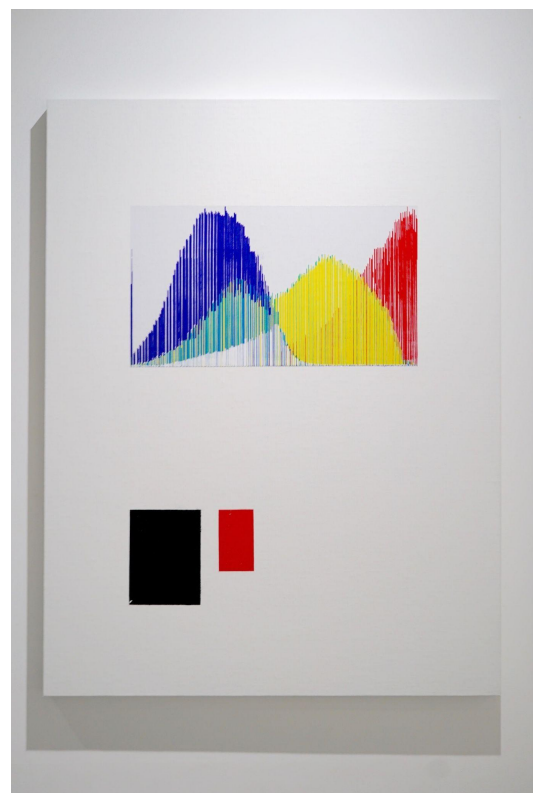
This exhibition will feature the 16 self-portraits by Vincent van Gogh. Downloaded from Wikipedia, Anze paints the image histograms of the self-portraits, on a canvas of the exact dimensions as the “original” paintings, to ask a simple question: What is contemporary photography?

In addition to *RGB*, which encompasses such fundamental question, the exhibition will also feature new works of his *Stripe (50Hz)* series, a representative work that has been produced daily since April 1, 2014, as Anze’s lifework.



Van_Gogh_Vase_with_Fifteen_Sunflowers_Amsterdam.jpg
from the series *RGB*

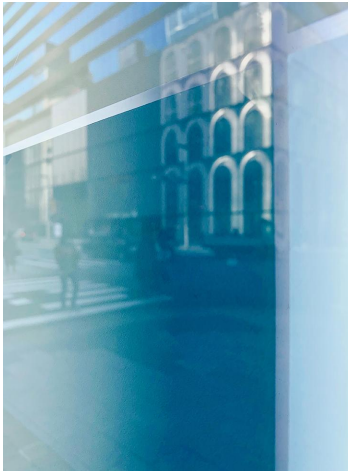
*referential image



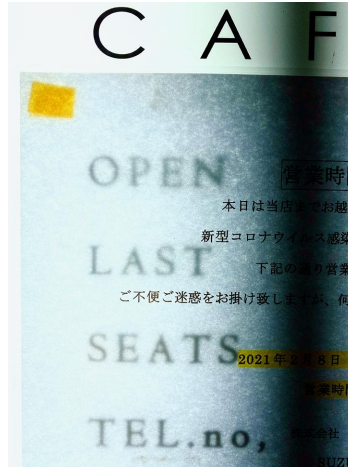
Van_Gogh_Vase_with_Fifteen_Sunflowers.jpg
from the series *RGB*

*referential image

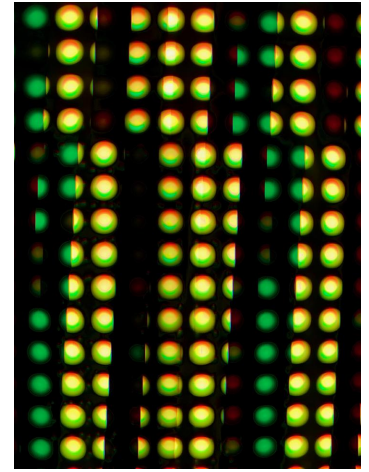
■ Please contact below for any image enquiries ■



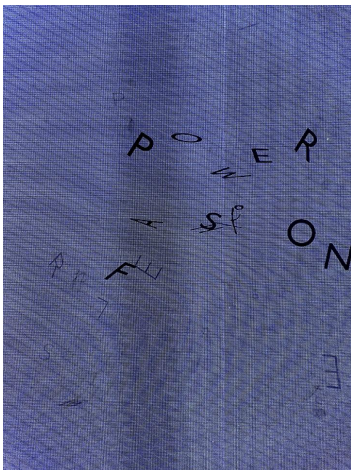
Stripe(50Hz) 2021/02/06 12:36:28 chuo-ku
2021 | digital type c print (frontier) | 297 × 210 mm
©Hideo Anze
courtesy KANA KAWANISHI GALLERY



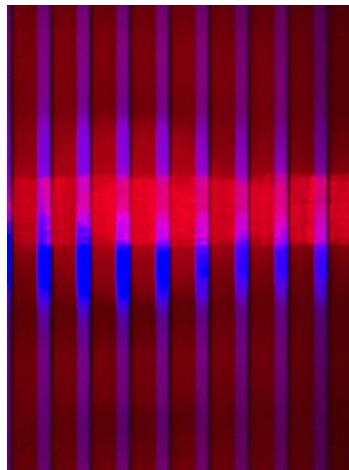
Stripe(50Hz) 2021/02/12 21:05:32 shibuya-ku
2021 | digital type c print (frontier) | 297 × 210 mm
©Hideo Anze
courtesy KANA KAWANISHI GALLERY



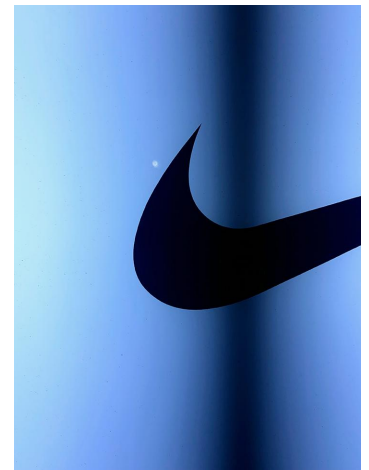
Stripe(50Hz) 2021/03/27 15:36:45 shibuya-ku
2021 | digital type c print (frontier) | 297 × 210 mm
©Hideo Anze
courtesy KANA KAWANISHI GALLERY



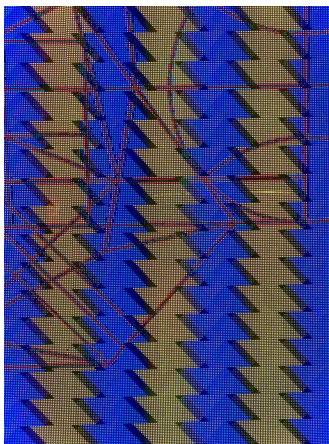
Stripe(50Hz) 2021/03/31 20:33:00 shibuya-ku
2021 | digital type c print (frontier) | 297 × 210 mm
©Hideo Anze
courtesy KANA KAWANISHI GALLERY



Stripe(50Hz) 2021/05/10 21:01:34 shinjuku-ku
2021 | digital type c print (frontier) | 297 × 210 mm
©Hideo Anze
courtesy KANA KAWANISHI GALLERY



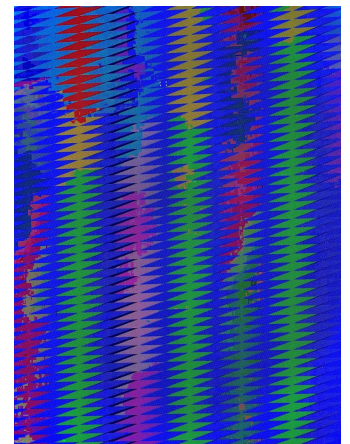
Stripe(50Hz) 2021/05/21 20:37:52 shibuya-ku
2021 | digital type c print (frontier) | 297 × 210 mm
©Hideo Anze
courtesy KANA KAWANISHI GALLERY



Stripe(50Hz) 2021/08/06 20:56:41 shinjuku-ku
2021 | digital type c print (frontier) | 297 × 210 mm
©Hideo Anze
courtesy KANA KAWANISHI GALLERY



Stripe(50Hz) 2022/03/03 20:37:39 shinjuku-ku
2021 | digital type c print (frontier) | 297 × 210 mm
©Hideo Anze
courtesy KANA KAWANISHI GALLERY



Stripe(50Hz) 2022/05/23 20:12:38 shinjuku-ku
2021 | digital type c print (frontier) | 297 × 210 mm
©Hideo Anze
courtesy KANA KAWANISHI GALLERY

■Please contact below for any image enquiries■



Artist Profile

Hideo Anze is an artist based in Yokohama and Tokyo.

Renowned for conceptual works using photography and contemporary media continuously made daily, his works have been acquired and exhibited in public and private institutions, including the British Museum (London), the Sanders Collection (Haarlem, Netherlands), Kana Kawanishi Gallery (Tokyo) and more others.

His major solo exhibitions include “Synchronicity” (2019, KANA KAWANISHI GALLERY, Tokyo), “Forms of Invisible Existence” (2016, KANA KAWANISHI GALLERY, Tokyo), and “RED 2014 365” (SUNDAY, Tokyo, 2016).

Group exhibitions include “One Picture Manifesto” (2022, KANA KAWANISHI PHOTOGRAPHY, Tokyo), “Body Politics: What Defines the Body?” (2018, KANA KAWANISHI PHOTOGRAPHY, Tokyo), “transcripts/memories” (2015, KANA KAWANISHI GALLERY, Tokyo) and others. His concept book *Red 2014 365* was published by Trademark Publishing (Germany) in 2016.

■Please contact below for any image enquiries■