

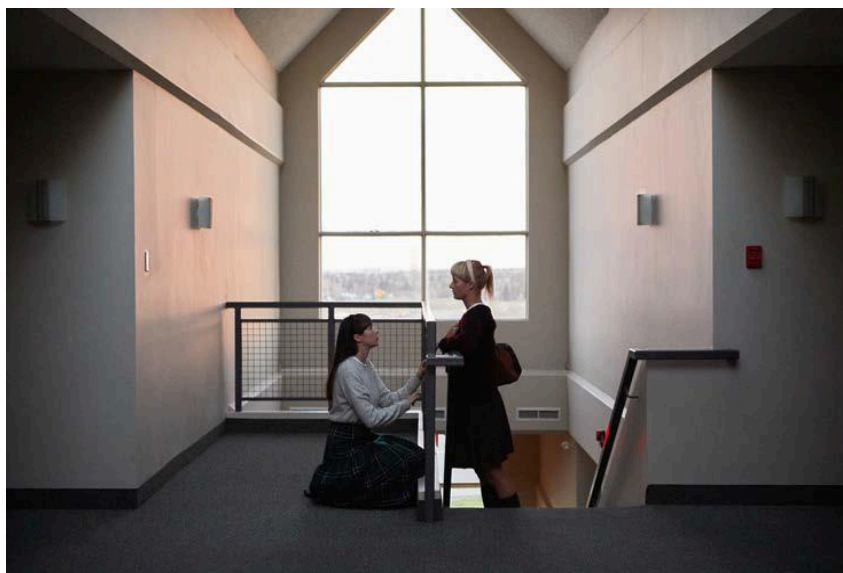
Elsa & Johanna Solo Exhibition “Beyond the Shadows”

■Period	May 31st (Saturday), 2025 - June 28th (Saturday), 2025
■Venue	KANA KAWANISHI PHOTOGRAPHY 2-7-5-5F, Nishiazabu, Minato-ku, Tokyo 106-0031 / Tel: +81 3 5843 9128
■Hours	Wed-Sat 13:00-18:00 (closed on Suns, Mon, Tue, and National Holidays)
□Cooperation	Galerie La Forest Divonne / T3 Photo Festival Tokyo

▼ OPENING RECEPTION

May 31st (Saturday), 2025 | 17:00-18:00

*Cocktails will be served in the artist's absence



First Floor

from the series *Beyond the Shadows*

2019 | edition of 5 + 2AP | semi-matt inkjet printing | 1067 × 1600 mm

courtesy Galerie La Forest Divonne/KANA KAWANISHI GALLERY

KANA KAWANISHI PHOTOGRAPHY is pleased to announce “Beyond the Shadows,” a solo exhibition by Elsa & Johanna, opening May 31, 2025.

Elsa & Johanna is an artist duo consisting of Elsa Parra and Johanna Benainous. Based in Paris, the duo intersects photography, performance, and video, using themselves as subjects to create a staged world that resembles a cinematic narrative.

This exhibition, “Beyond the Shadows,” showcases a series created during a one-month residency in Calgary, located in northern Canada. The artists were immediately captivated by Canada, particularly Calgary, one of the country’s largest cities, which was a cowboy town until the 1970s. Calgary served as an ideal source of inspiration for the duo, as the city has undergone spectacular economic growth and now boasts a population of over a million.

■Please contact below for any image enquiries■

Calgary is now a world-class economic center with a population of nearly 1.4 million people and is home to many companies in the oil, natural gas, tourism, and, more recently, technology and clean tech sectors. With the steep Rocky Mountains rising behind the rolling hills that were once home to wild buffalo, the city embraces a diverse array of stories within its landscape.

During their month-long stay, the duo immersed themselves in the creation of their own fiction, taking on every role from location scouting and styling to preparing accessories and playing character roles, and created a total of 84 works. Moving freely among people of all ages and genders, they wove stories that were domestic, intimate, social, and poetic, blurring the line between fiction and reality.

We cordially invite all to see the works by the artist duo who are showcasing works now worldwide.

*This exhibition is a re-organized version of the works showcased in the T3 PHOTO FESTIVAL TOKYO 2023 exhibition.



Less Home

from the series *Beyond the Shadows*

2019 | edition of 5 + 2AP

semi-matt inkjet printing | 600 × 900 mm

courtesy Galerie La Forest Divonne/KANA KAWANISHI GALLERY



Theorem

from the series *Beyond the Shadows*

2019 | edition of 5 + 2AP

semi-matt inkjet printing | 600 × 900 mm

courtesy Galerie La Forest Divonne/KANA KAWANISHI GALLERY



Mother and Daughter

from the series *Beyond the Shadows*

2019 | edition of 5 + 2AP

semi-matt inkjet printing | 800 × 1200 mm

courtesy Galerie La Forest Divonne/KANA KAWANISHI GALLERY



The Sunnyside

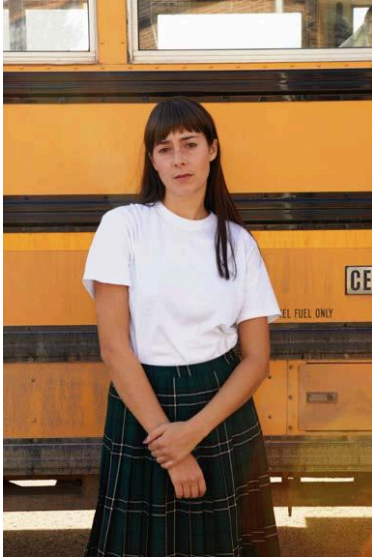
from the series *Beyond the Shadows*

2019 | edition of 5 + 2AP

semi-matt inkjet printing | 800 × 1200 mm

courtesy Galerie La Forest Divonne/KANA KAWANISHI GALLERY

■Please contact below for any image enquiries■



Millarville

from the series *Beyond the Shadows*
 2019 | edition of 5 + 2AP
 semi-matt inkjet printing | 1080 × 720 mm
 courtesy Galerie La Forest Divonne
 /KANA KAWANISHI GALLERY



The True Life Story

from the series *Beyond the Shadows*
 2019 | edition of 5 + 2AP
 semi-matt inkjet printing | 600 × 400 mm
 courtesy Galerie La Forest Divonne
 /KANA KAWANISHI GALLERY



Red Squirrel

from the series *Beyond the Shadows*
 2019 | edition of 5 + 2AP
 semi-matt inkjet printing | 600 × 400 mm
 courtesy Galerie La Forest Divonne
 /KANA KAWANISHI GALLERY

Artist Statement

We were immediately drawn to Canada, and in particular to Calgary;
 one of the largest cities in the country, which was initially a cowboy town until the 1970s.
 With its spectacular economic growth, it now has over a million inhabitants.
 We were like sponges that absorb landscapes and spit out a coloured liquid as soon as you squeeze them.

Elsa & Johanna

Artist Profile

Elsa & Johanna

Elsa & Johanna is an artist duo formed by French artists, Elsa Parra (1990-) and Johanna Benainous (1991-) in 2014.

Their recent solo exhibitions include “Climbing into Another Skin” (2024, Mai Manó House, Budapest), “Chronicles of the Ordinary” (2024, Galerie La Forest Divonne, Paris), “A Couple of Them” (2023, Pont Saint-Ange, Paris), and “The Plural Life of Identity” (2022, Museum of Karlsruhe, Germany). Group exhibitions and photo festivals include “T3 PHOTO FESTIVAL TOKYO” (2023, Tokyo), “Entres les Mondes” (2022, Castle of Santo Estêvão, Lisbon, Portugal), “Je te laisse les clefs” (2021, H Gallery, Paris), “Festival Photo Saint-Germain + Photo Days” (2020, Galerie La Forest Divonne, Paris), and “Not So Crazy Girls” (2020, Espace Futur, Paris).

In 2020, they were shortlisted for the Discovery Award at the Rencontres d'Arles and published their first monograph, *Beyond the Shadows*. They will also design a new train station for the city of Paris, scheduled to open in 2026.

■ Please contact below for any image enquiries ■