

Ryoichi Fujisaki Solo Exhibition “Material Phenomenon”

■ Period	July 15th (Friday) - August 13th (Saturday)
■ Hours	12:00 noon - 7:00 pm Closed on Sun, Mon, National Holidays
■ Venue	KANA KAWANISHI GALLERY 3-9-11 Minami Azabu, Minato-ku, Tokyo 106-0047 JAPAN tel +81 3 5843 9128 e-mail gallery@kanakawanishi.com

※OPENING RECEPTION※
July 15th (Friday) 6:00 pm - 8:00 pm

KANA KAWANISHI GALLERY is pleased to announce Ryoichi Fujisaki's solo exhibition *Material Phenomenon*, from Friday, July 15th. After presenting his solo exhibition *ADDICT* at four venues for five months in a row, Ryoichi Fujisaki had his first solo exhibition *Vector of Energy* in Osaka, his home town, which acquired a good reputation. This exhibition *Material Phenomenon* is his long-awaited first solo show at KANA KAWANISHI GALLERY.

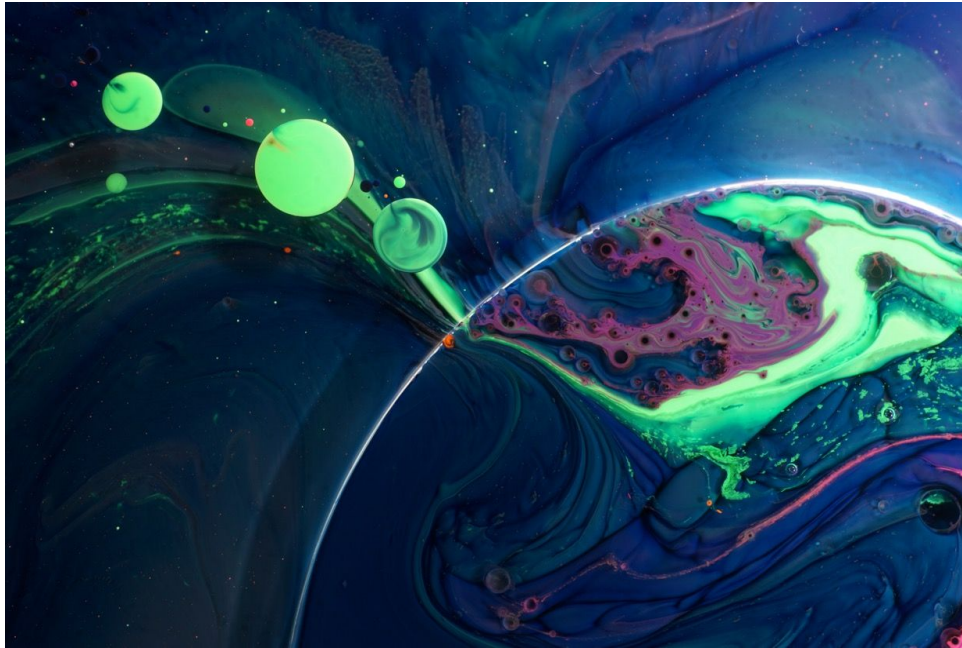
The title of this exhibition *Material Phenomenon* comprehensively represents the essence of his work which Fujisaki creates through varied medium such as sculpture, photography and video. His sculpture work *plaster* series, which is made out of sprayed plaster, his photographic series *colored oil* and video series *metaball*, which capture movements of oil and water-based liquid, and another of his video work *crash* series, where he keeps destroying disused appliances and furniture, involve multiple aspects in common while they seem like not having connections with each other.

First of all, Fujisaki's work extracts potential values of “materials”. Fujisaki, who worked as technical director at various fields such as studios and creative platforms after completing M.A at Kyoto City University Graduate School of Arts, Department of Sculpture, transforms everyday materials into art work showing hidden aspects of them by combining “phenomenon” with his knowledge of “materials” acquired in his background.

His work extracts process itself often missed such as “situation” and “state”, which is another of his work's characteristics. The group of works, shaping itself while drawing contingency under Fujisaki's heightened concentration, contains the one and only presence, which no one but Fujisaki can create, whereas it originates from everyday motifs everyone is familiar with.

Unconscious and concentration, progressive and symbolic, physical and material, and monaural and multistoried. The works may seem as though contradicting each other composed by opposite vectors, however may connote the wordless beauty within themselves being created in a condition of the “ultimate neutrality,” obtained in the extremely heightened state of opposing gravitations. We hope you all enjoy the further in-depth new works expressed by Fujisaki.

■For inquires of images/photographs on this press release, please contact us below■



colored oil 080

2016, archival pigment print © Ryoichi Fujisaki, courtesy KANA KAWANISHI GALLERY



colored oil 081

2016, archival pigment print © Ryoichi Fujisaki, courtesy KANA KAWANISHI GALLERY

Ryoichi Fujisaki

Born 1975, in Osaka. Completed M.A at Kyoto City University Graduate School of Arts, Department of Sculpture. Began his artistic career in 2015. Fujisaki creates work purely extracting fundamental matters of materials and phenomenon through varied medium. His solo shows include *ADDICT* (CC4441 / Seibu Shibuya Alternative Space / SONO AIDA#1 / island MEDIUM, 2015), *Vector of Energy* (the three konohana, 2016).

■For inquires of images/photographs on this press release, please contact us below■